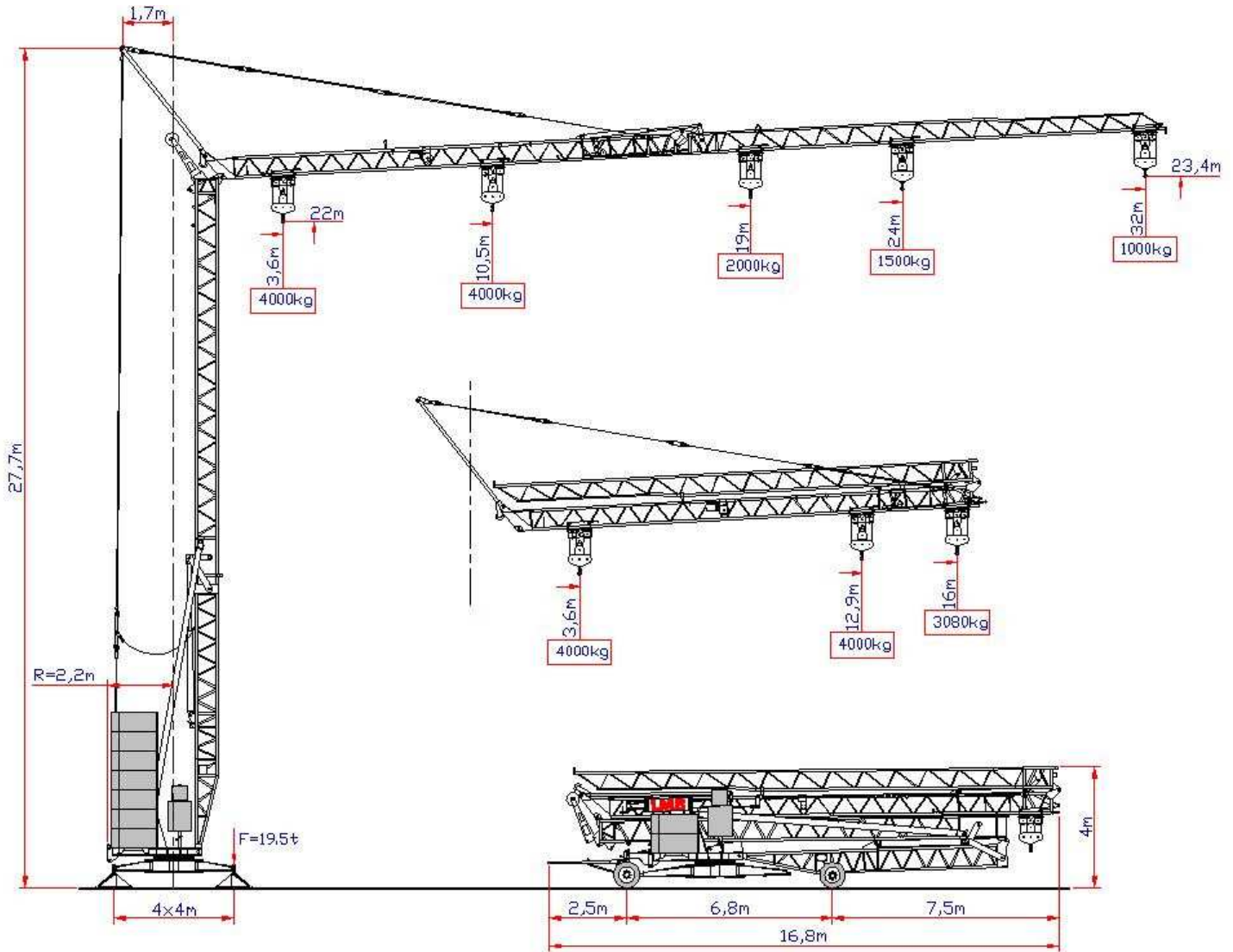


LMB

Snelmontagekranen – Grues à montage rapide











10,5	12	13	14	15	16	17	18	19	20	21	22	23	24	25	26	27	28	29	30	31	32	m
4000	3350	3080	2810	2600	2390	2235	2080	2000	1820	1715	1610	1555	1500	1430	1300	1245	1190	1140	1090	1050	1000	



19	20	21	22	23	24	25	26	27	28	29	30	31	32	m
2000	1820	1715	1610	1555	1500	1430	1300	1245	1190	1140	1090	1050	1000	kg

HD 1032 C

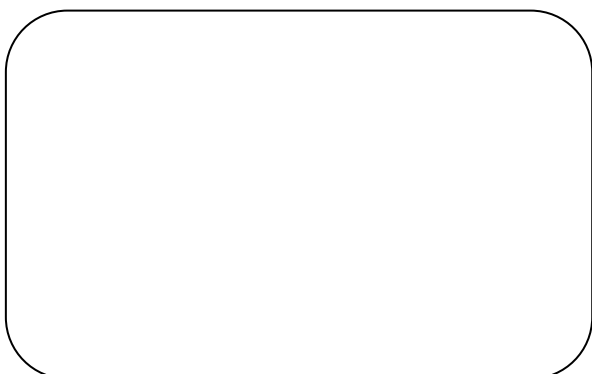
Snelmontagekraan – Grue à montage rapide

HD 1032 C								
			m/min	kg	kW	m/min	kg	kW
			0 - 3	2000		0 - 1,5	4000	
Hijzen Levage			3 - 20	2000	7,5	1,5 - 10	4000	7,5
			20 - 38	1000		10 - 19	2000	
Loopkat Distribution			6 - 18 - 36	2000	3	6 - 18 - 36	4000	3
Zwenken Orientation			0,2 - 0,5 - 0,9 tr/min 7 daNm					
Montage Montage							3 kW	
Benodigde stroom Puissance électrique nécessaire							20kVA	
Netspanning Réseau							400V - 50Hz	
Ballast Ballast							21 840 kg	
Gewicht kraan Poids de la grue							15 500 kg	

Niet-contractueel commercieel document. Voor technische informatie, gelieve zich te begeven naar onze correspondent.

Document commercial non contractuel. Pour toute information technique se référer à la notice correspondante.

Verdeler:



LMB Bouwmachines Bvba

Industrieweg-Noord 1170
3660 Opglabbeek - België

Tel: +32 (0) 89 61 45 63
Fax: +32 (0) 89 61 45 64
Mail: info@lmb.be
www.lmb.be

HD 1032 C

Snelmontagekraan – Grue à montage rapide